

TUOLUMNE RIVER

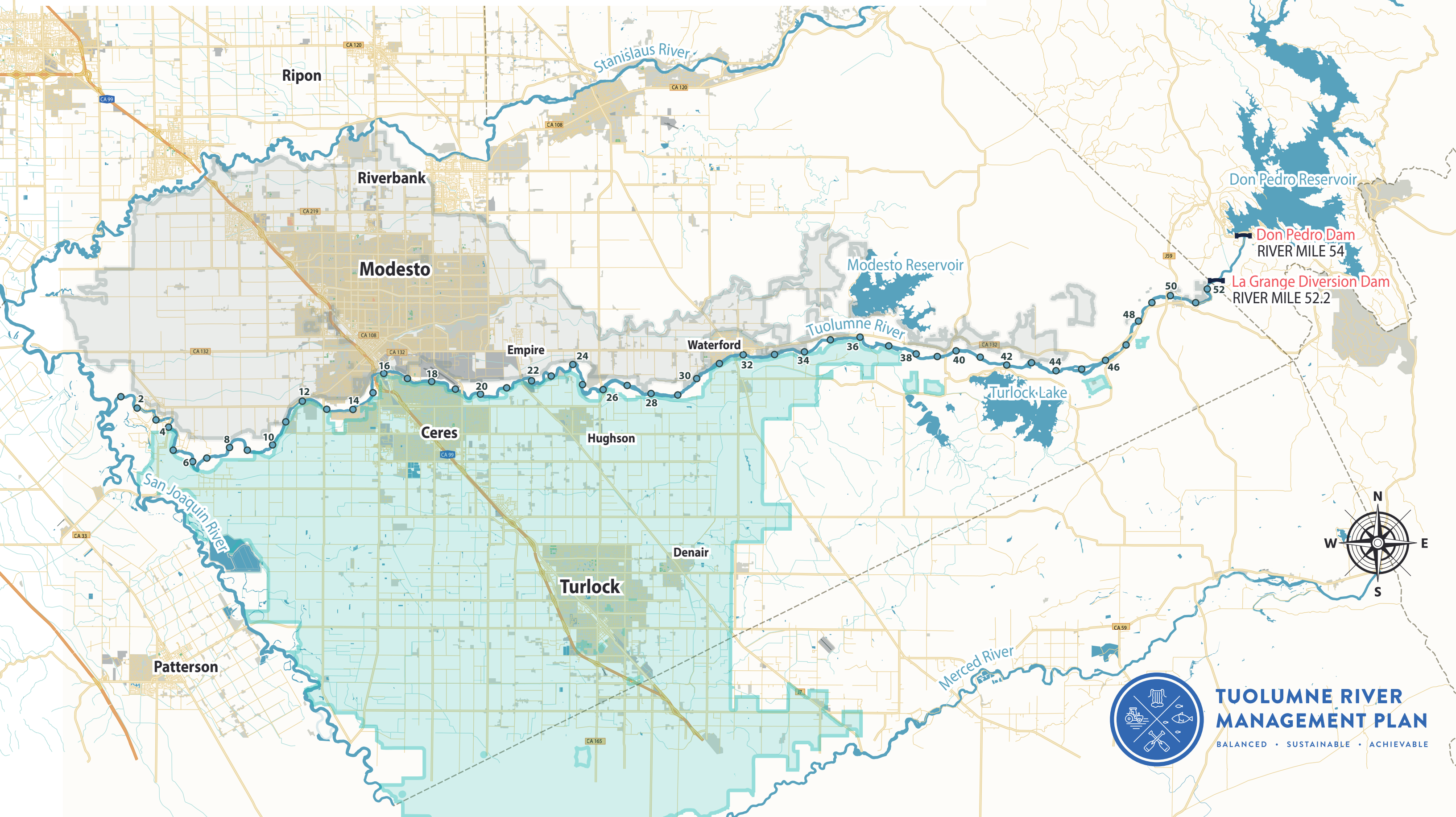
● River Mile

Turlock Irrigation District

Modesto Irrigation District

5 miles

1:146



**TUOLUMNE RIVER
MANAGEMENT PLAN**

BALANCED • SUSTAINABLE • ACHIEVABLE

PROPOSED MEASURES

1

Predator Control and Suppression Program

The Districts will advocate for specific incentives and programs targeting an annual reduction in the population of black bass and striped bass by approximately 20% above the barrier weir and 10% below the barrier weir of levels documented in 2012.

2

Water Hyacinth Removal

The Districts would provide \$50,000 per year to the Division of California Boating and Waterways to assist its program of removal of water hyacinth and other non-native flora.

3

Infiltration Gallery

Diverting water for irrigation purposes at the infiltration galleries will allow additional water to flow from La Grange to benefit Tuolumne River cold-water fisheries while also protecting the Districts' water supplies. This new diversion option for irrigation ensures a balanced and sustainable use of water.

4

Fish Counting and Barrier Weir

The weir would reduce predation by prohibiting upstream movement of striped bass and other bass species into the prime rearing areas for juvenile salmon and O. mykiss. The five-foot-high weir would include a fishway and counting window, allow species separation and provide a salmon viewing opportunity for the public.

5

Experimental Gravel Cleaning Program

The Districts would conduct a five-year program of experimental gravel cleaning using a gravel ripper and pressure wash operated from a backhoe, or equivalent methodology, in cooperation with resource agencies.

6

Instream Habitat Complexity Program

Introduction of Large Woody Debris (LWD) or suitably sized cobble/boulder material for introducing greater instream structure and habitat complexity. The Districts would identify, collect and place boulder-size stone in select locations between river miles 42 and 50, the preferred habitat reach of O. mykiss.

7

Coarse Sediment Management Program

Improve spawning gravel quantity and quality to benefit lower Tuolumne River salmonids by adding over 75,000 tons of new coarse sediment.

8

Tuolumne River Restoration Hatchery

The purpose of the hatchery would be to support the protection and expansion of a Tuolumne River fall-run Chinook population. The Districts would pay for hatchery construction, and operation and maintenance for the first 20 years, at which time the success of hatchery measures would be re-evaluated.

9

Ward's Ferry Boat Takeout Improvement

The Districts are proposing the construction of a deck on river left, upstream of Ward's Ferry Bridge, large enough to accommodate two or three truck cranes and hauling vehicles at one time, which will reduce congestion and improve safety on the bridge.



These measures are to be viewed as a suite of flow and non-flow actions which taken together will benefit fishery resources while being protective of agricultural and municipal water supplies, especially during successive dry year periods.



tuolumnerivermanagementplan.com