

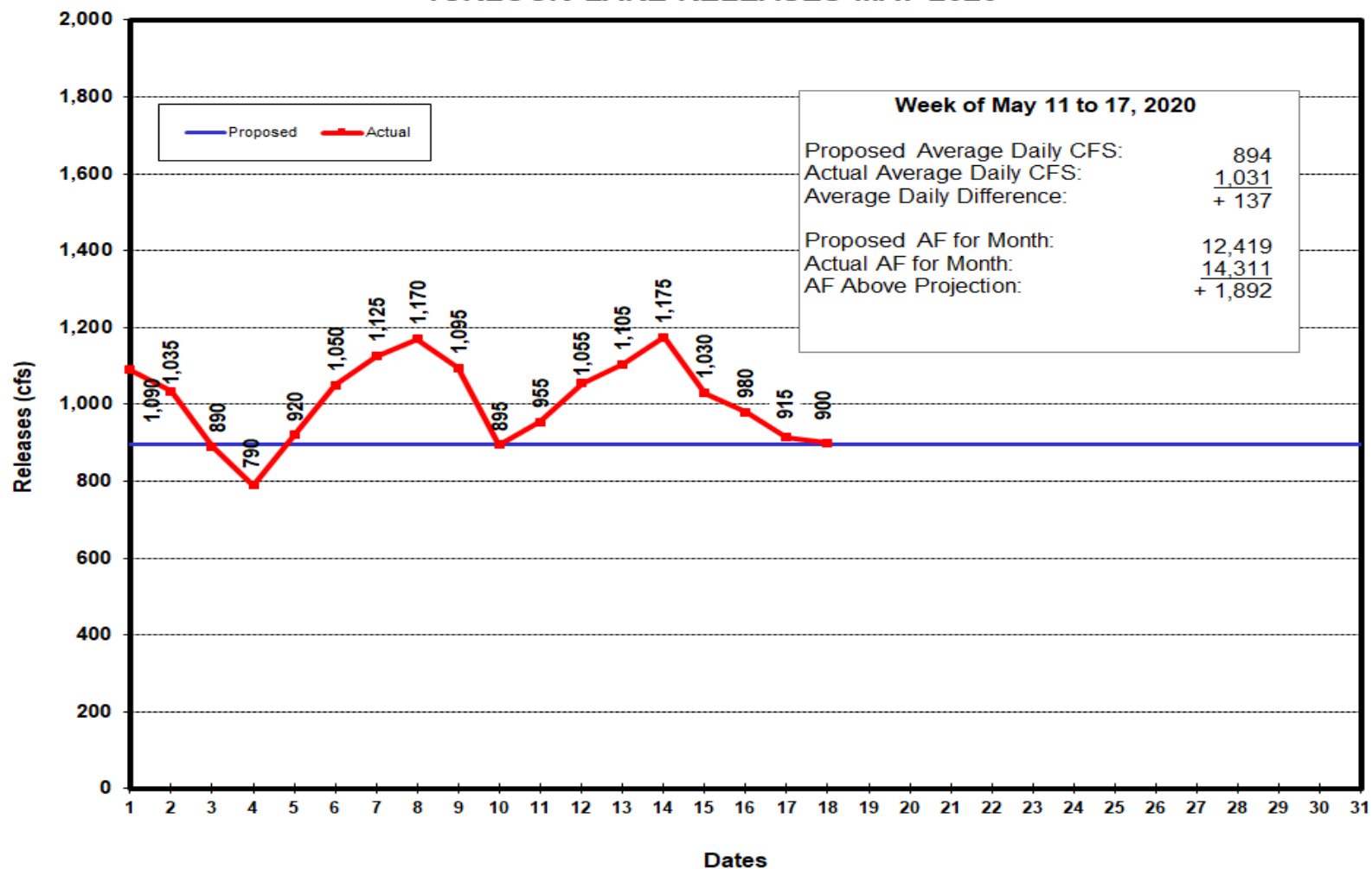
# **Water Distribution Department Report**

## **Week of May 11 to May 17, 2020**



**WATER & POWER**  
Serving Central California since 1887

# TURLOCK LAKE RELEASES MAY 2020



**2020 Irrigation Season  
Water Distribution Department  
Weekly Board Report Information**

**Week of: May 11, 2020**

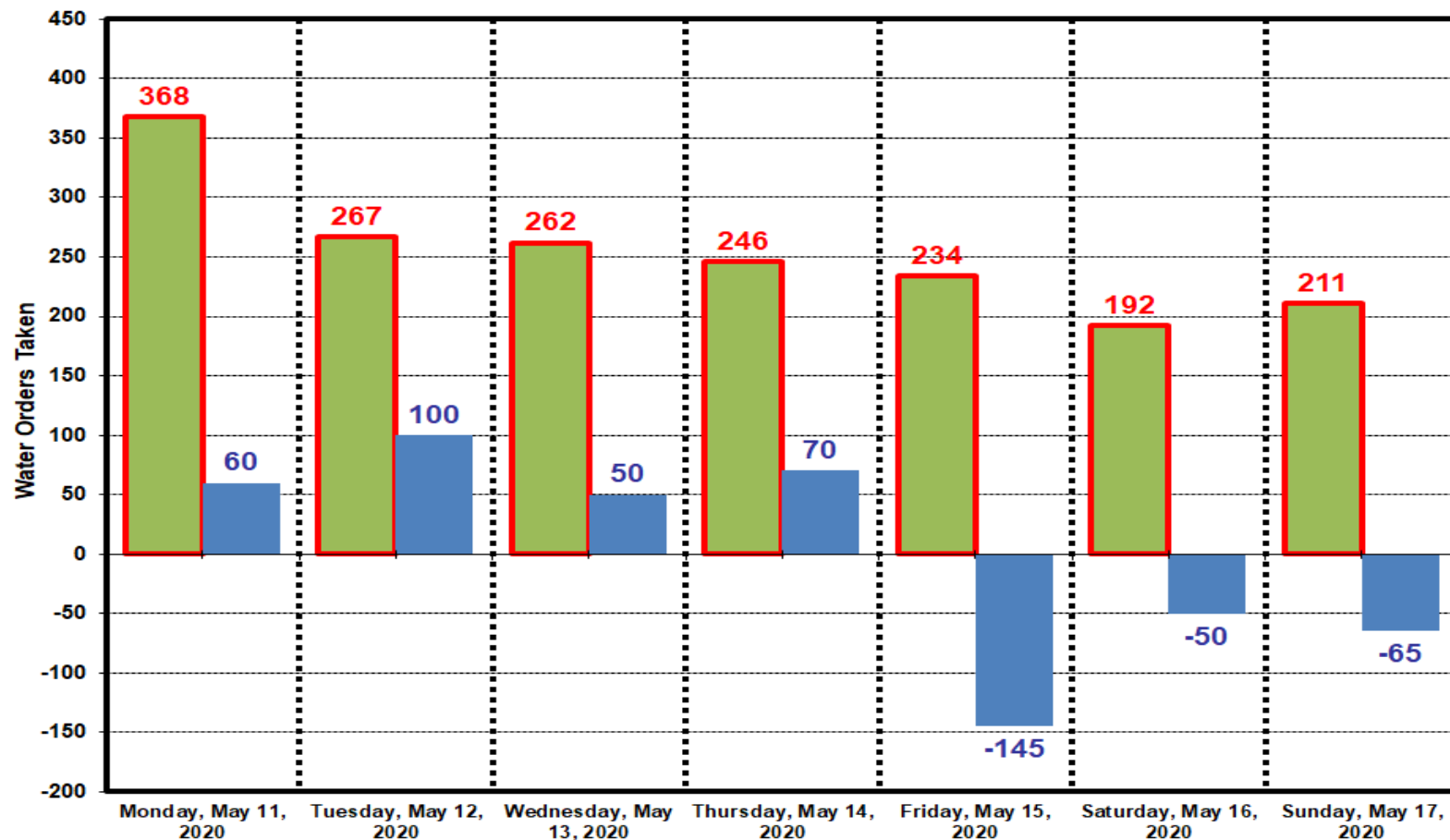
| <b>Year</b> | <b>Orders</b> | <b>High Flow</b> | <b>Low Flow</b> |
|-------------|---------------|------------------|-----------------|
| <b>2020</b> | <b>1,780</b>  | <b>1,170</b>     | <b>915</b>      |
| <b>2019</b> | <b>971</b>    | <b>1,145</b>     | <b>575</b>      |
| <b>2018</b> | <b>1,969</b>  | <b>1,245</b>     | <b>1,030</b>    |
| <b>2017</b> | <b>1,998</b>  | <b>1,230</b>     | <b>980</b>      |
| <b>2016</b> | <b>1,269</b>  | <b>1,165</b>     | <b>800</b>      |
| <b>2015</b> | <b>1,152</b>  | <b>710</b>       | <b>435</b>      |
| <b>2014</b> | <b>1,127</b>  | <b>810</b>       | <b>545</b>      |
| <b>2013</b> | <b>1,189</b>  | <b>1,005</b>     | <b>760</b>      |
| <b>2012</b> | <b>1,397</b>  | <b>1,250</b>     | <b>920</b>      |
| <b>2011</b> | <b>1,303</b>  | <b>1,170</b>     | <b>1,000</b>    |
| <b>2010</b> | <b>942</b>    | <b>1,170</b>     | <b>745</b>      |
| <b>2009</b> | <b>1,425</b>  | <b>1,330</b>     | <b>935</b>      |

**Daily Changes:**

|                     |             |
|---------------------|-------------|
| <b>May 11, 2020</b> | <b>60</b>   |
| <b>May 12, 2020</b> | <b>100</b>  |
| <b>May 13, 2020</b> | <b>50</b>   |
| <b>May 14, 2020</b> | <b>70</b>   |
| <b>May 15, 2020</b> | <b>-145</b> |
| <b>May 16, 2020</b> | <b>-50</b>  |
| <b>May 17, 2020</b> | <b>-65</b>  |

# Water Orders Taken/Change in Turlock Lake Releases

## May 11 - 17, 2020



# Water Orders Taken by SA for May 11 to May 17, 2020

